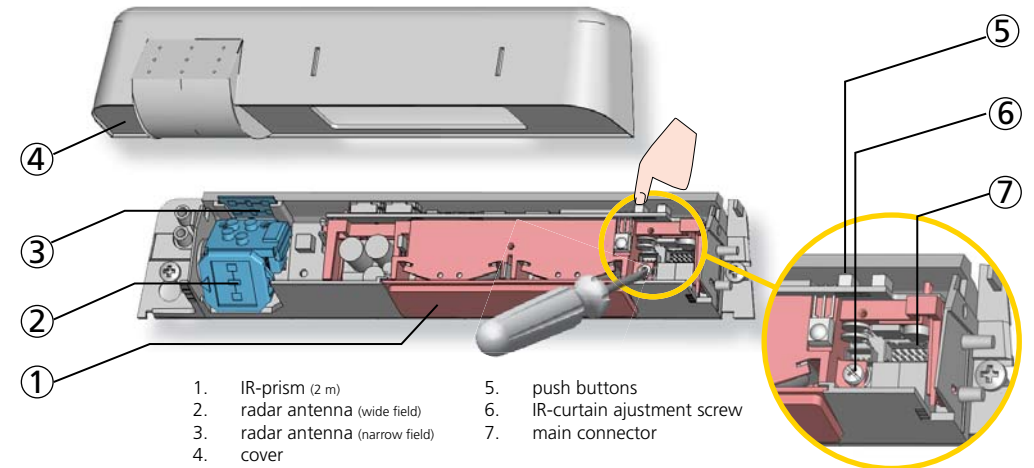


	The ORANGE LED flashes every second.	The sensor goes into security mode.	<b>1</b> Cut and restore power supply.
	The ORANGE LED flashes 1 x.	The sensor signals an internal fault.	<b>1</b> Cut and restore power supply. <b>2</b> If orange LED flashes again, replace sensor.
	The ORANGE LED is on.	The sensor encounters a memory problem.	<b>1</b> Cut and restore power supply. <b>2</b> If orange LED lights up again, replace sensor.
	The RED LED flashes quickly after an assisted setup.	The sensor sees the door during the assisted setup.	<b>1</b> Change the angle of the IR-curtains. <b>2</b> Launch a new assisted setup. <i>Attention: Do not stand in the detection field!</i>
	The RED LED lights up sporadically.	The sensor vibrates.	<b>1</b> Check if the sensor is fastened firmly. <b>2</b> Check position of prism and cover.
		The sensor sees the door.	<b>1</b> Launch an assisted setup and adjust the IR angle.
		The sensor is disturbed by lamps or another sensor.	<b>1</b> Choose a different frequency by remote control.
		The sensor is disturbed by the rain.	<b>1</b> Increase the IR-immunity filter by remote control. <b>2</b> Select presetting 2 or 3 by push button.
	The GREEN LED lights up sporadically.	The sensor is disturbed by rain and/or leaves.	<b>1</b> Select presetting 2 or 3 by push button. <b>2</b> Increase radar-immunity filter by remote control.
		Ghosting	<b>1</b> Change radar antenna angle.
		The sensor vibrates.	<b>1</b> Check if the sensor is fastened firmly. <b>2</b> Check position of cable and cover.
		The sensor sees the door or other moving objects.	<b>1</b> Remove the objects if possible. <b>2</b> Change radar antenna. <b>3</b> Change radar field size (sensitivity).
		The reaction of the door does not correspond to the LED-signal.	<b>1</b> Check output configuration setting. <b>2</b> Switch value 1 (A-P) to 4 (A-A) or 4 to 1 by remote control.

DESCRIPTION



TECHNICAL SPECIFICATIONS

Supply voltage:	12 V - 24 V AC +/-10% ; 12 V - 30 V DC -5%/+10%
Power consumption:	< 3 W
Mounting height:	1.8 m to 4 m
Temperature range:	-25 °C to +55 °C
Degree of protection:	IP54
Norm conformity:	R&TTE 1999/5/EC; EMC 2004/108/EC

Detection mode:	Motion Min. detection speed: 5 cm/s (in axis)	Presence Typical response time: <128 ms (max. 500 ms)
Technology:	Microwave and microprocessor Transmitter frequency: 24.150 GHz Transmitter radiated power: < 20 dBm EIRP Transmitter power density: < 5 mW/cm2	Active IR and self-monitored microprocessor Spot diameter: 0.1 m max. Number of spots: 24 or 12 by curtain Number of curtains: 2
Angle:	From 15 ° to 50 ° in elevation (adjustable)	From -4 ° to +4 ° (adjustable)
Output:	Relay (free of potential contact) Max. contact voltage: 42 V AC/DC Max. contact current: 1 A (resistive) Max. switching power: 30 W (DC)/60 VA (AC)	Relay (free of potential contact) Max. contact voltage: 42 V AC/DC Max. contact current: 1 A (resistive) Max. switching power: 30 W (DC)/60 VA (AC)
Hold-open time:	0.5 s to 9 s (adjustable)	0.3 s or 1 s (not adjustable)

# 1 MOUNTING & WIRING

12-24 V AC-DC

- GREEN: POWER SUPPLY
- BROWN: POWER SUPPLY
- YELLOW: OPENING INPUT (OPENS DOOR)
- BLACK: OPENING INPUT (OPENS DOOR)
- WHITE: OPENING INPUT (OPENS DOOR)
- PINK: SAFETY INPUT (KEEPS DOOR OPEN)
- GREY: SAFETY INPUT (KEEPS DOOR OPEN)
- VIOLET: SAFETY INPUT (KEEPS DOOR OPEN)

\* powered, no detection

# 2 RADAR FIELD

WIDTH

ANGLE

For a narrow field, use the 2nd antenna.

4 m x 2 m

2 m x 2.5 m

# 3 INFRARED FIELD

WIDTH

ANGLE

Max. installation height = 3 m

Max. installation height = 4 m

«click»

max. 5 cm

DOOR

ORANGE

CLOSER

AWAY

# 4 SETTINGS (by push buttons and/or remote control)

RADAR FIELD SIZE (SENSITIVITY)

xxs, XS, S ...

... L, XL, XXL

FACTORY VALUES

SHORT PUSH LEFT (decreases by 1 value)

SHORT PUSH RIGHT (increases by 1 value)

PUSH LEFT + RIGHT AT THE SAME TIME

PRESETTINGS

3x GREEN LED

IR-CURTAINS

indoor (FACTORY VALUES)

outdoor

shopping street

door opens only if motion + presence detection

PUSH LEFT (KEEP PUSHED)

RELEASE AFTER FLASH OF DESIRED SETTING

PRESETTING SELECTED

FIELD SIZE (SENSITIVITY)		XXS	XS	S	>	>	>	L	XL	XXL	L= 3.20 m x 1.40 m (at 2.2 m)
IMMUNITY FILTER			low	normal	high	>	>	>	>	>	
DETECTION MODE			bi	uni	uni SLOW	uni AWAY	bi = two-way detection uni = one-way detection towards sensor		SLOW = slow motion detection AWAY = away from sensor		
HOLD-OPEN TIME		0.5 s	1 s	2 s	3 s	4 s	5 s	6 s	7 s	8 s	9 s

OUTPUT CONFIGURATION		A-P	P-A	P-P	A-A	A = active output (NO-contact) P = passive output (NC-contact)	Opening Presence
----------------------	--	-----	-----	-----	-----	---	---------------------

NUMBER OF CURTAINS	B	service mode	1	2	dynamic mode	service mode = no curtain is active during 15 minutes (maintenance). dynamic mode = 2nd curtain is active or not, depending on level of disturbances.					
IMMUNITY FILTER			normal	high	rain	snow	heavy snow				
PULSE FREQUENCY	D		freq 1					freq 1	freq 2		
MAX. PRESENCE TIME		30 s	1 min	2 min	5 min	10 min	20 min	60 min			

Presetting 1 : indoor (FACTORY VALUES)

Presetting 2 : outdoor

# 5 SETUP (by push button or remote control)

Please step out of the infrared field.

QUICK SETUP = RED-GREEN OFF

ASSISTED SETUP = PUSH RIGHT UNTIL RED-GREEN OFF

TIP: Launch an **ASSISTED SETUP** to verify wiring, position of the curtains and correct functioning of the sensor.